

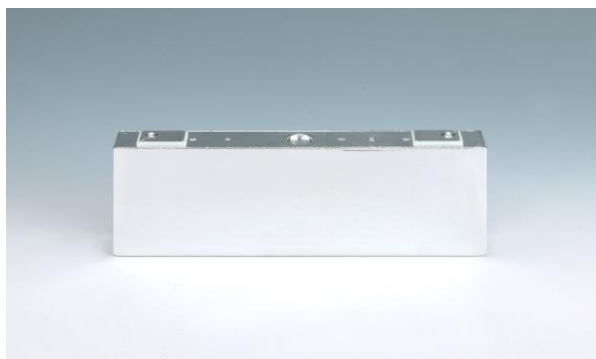
Prime Planet Energy & Solutions Begins Mass Production of New BEV Battery at Himeji Plant

Prime Planet Energy & Solutions, Inc. (Head Office: Chuo-ku, Tokyo; President: Hiroaki Koda; hereinafter “the Company” or “PPES”) has started up a new production line at its Himeji Plant and begun mass production of a new model of prismatic lithium-ion battery for battery electric vehicles (BEVs) (hereinafter “the Product”). While maintaining safety, the Product offers higher capacity than previous models and will be installed in Toyota Motor Corporation’s new bZ4X and Lexus RZ, both scheduled for release from this autumn onward, as well as Subaru Corporation’s new Solterra.

Developed by PPES as a new model of prismatic lithium-ion battery for BEVs, the Product increases capacity while keeping the same cell size as previous models, thereby improving energy density. At the same time, PPES maintains the Product’s core strengths—high safety, durability, and long life—contributing to enhanced performance and safety in BEVs.

The new line at the Himeji Plant was added to expand production capacity in accordance with the production capability enhancement plan announced in August 2022 (Note 1), and mass production of the Product began in January 2025.

Through mass production of the Product, PPES is contributing to the Toyota Group’s optimal battery production structure. By leveraging PPES’s independently cultivated know-how in high-capacity batteries—including cell development, process engineering, manufacturing, and materials procurement—together with the manufacturing strengths and expertise of Toyota Group companies, we are strengthening collaboration to further improve quality and productivity, advance operations and skills. Going forward, while closely monitoring global demand trends, we will continue to provide high-quality batteries tailored to customer needs.



BEV prismatic lithium-ion battery cell (new model)



PPES Himeji Plant

Note 1: “Prime Planet Energy & Solutions to Enhance Production Capabilities for Lithium-Ion Batteries for BEV” (announced August 31, 2022)

For reference

○ Prime Planet Energy & Solutions, Inc.

Established as a joint venture for prismatic automotive batteries by Toyota Motor Corporation and Panasonic Corporation (now Panasonic Holdings Corporation); operations began in April 2020 (ownership ratio: Toyota 51%, Panasonic 49%).

Main business: Development, manufacturing, and sales of prismatic lithium-ion batteries for automotive applications, etc.

Website: <https://www.p2enesol.com/en/>

○ PPES Himeji Plant

- Address: 1-6, Megahita-cho, Shikama-ku, Himeji-shi, Hyogo Prefecture
- Products: Prismatic lithium-ion batteries for battery electric vehicles (BEVs); prismatic lithium-ion batteries for plug-in hybrid vehicles (PHEVs)

End